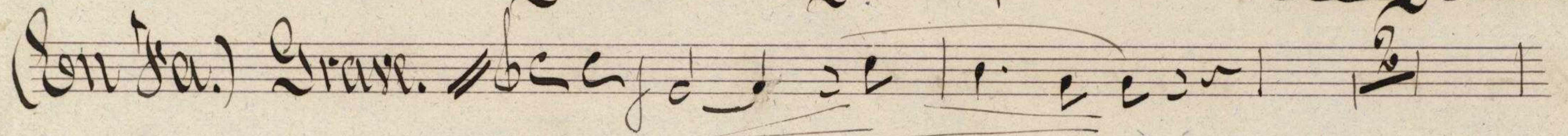
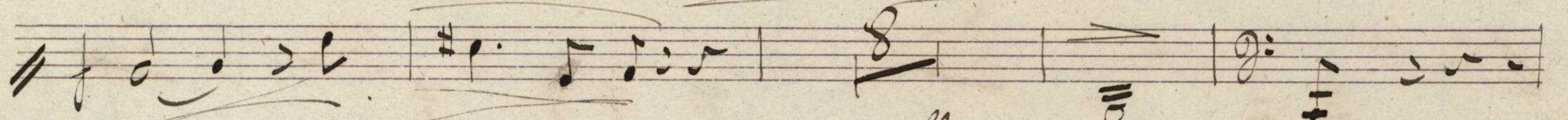
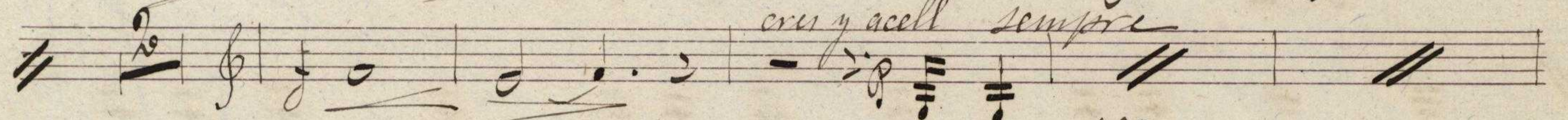


Santalsiel de Organo Obligado, por D. J. J. Trompa 2<sup>a</sup>

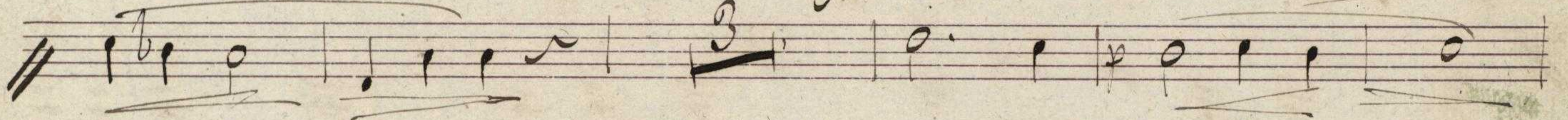
(En Fa.) Grave. 

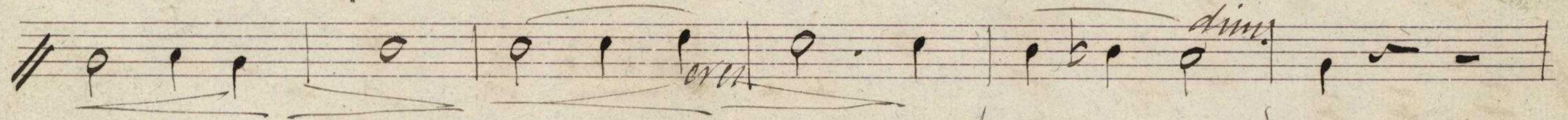


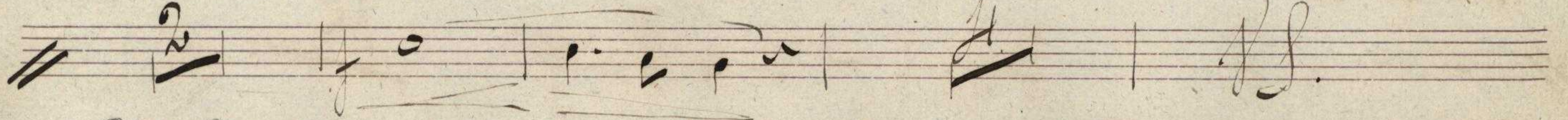
 *crece y accel sempre*

 *graz.*

*Andte maest.*  *fall*

 *3*

 *dim.*

 *2* *4* *1/2*

Handwritten musical notation on a single staff, featuring a series of notes and rests. A double bar line is present at the end of the staff, followed by the word *dimu*.

Handwritten musical notation on a single staff, featuring a series of notes and rests.

Handwritten musical notation on a single staff, featuring a series of notes and rests. The word *Andante* is written above the staff.

Handwritten musical notation on a single staff, featuring a series of notes and rests. The word *dimu* is written above the staff.

Handwritten musical notation on a single staff, featuring a series of notes and rests.

Handwritten musical notation on a single staff, featuring a series of notes and rests. The words *molto cres* and *rit.* are written above the staff.

Handwritten musical notation on a single staff, featuring a series of notes and rests.

Handwritten musical notation on a single staff, featuring a series of notes and rests. The words *Andante quasi* and *Andante* are written above the staff.

Handwritten musical notation on a single staff, featuring a series of notes and rests. The word *solo* is written below the staff.

Handwritten musical notation on a single staff, featuring a series of notes and rests.

Handwritten musical score on six staves. The notation includes various note values, rests, and dynamic markings. The first five staves contain a continuous melodic and harmonic line. The sixth staff ends with a double bar line and a flourish.

rit. dim: *cru* *q<sup>to</sup>*

*po<sup>o</sup> rit<sup>o</sup>* *Tempo*

Handwritten musical score on two staves, heavily crossed out with diagonal lines. The notation is mostly illegible due to the scribbles. Some tempo markings like "Grave", "Tempo", and "Mozzo" are visible.

*lola*

*Grave*

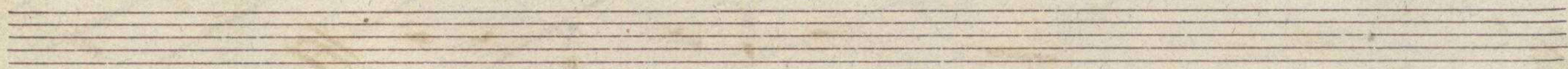
*Tempo*

*Mozzo*

*Tempo*

Moderato assai

Handwritten musical score consisting of ten staves. The notation includes various notes, rests, and dynamic markings such as *dim*, *cres*, and *molto cres*. There are also some large handwritten numbers, possibly "19", written over the staves.



Handwritten musical score on three staves. The top staff begins with a double bar line and contains several measures of music, including a group of four notes with accents. The middle staff starts with a treble clef, a key signature of one flat, and the tempo marking "mosso". It contains several measures, including a measure with a fermata. The bottom staff begins with a bass clef and a key signature of one flat, followed by several measures of music. The notation is in a cursive, handwritten style.

Eight empty musical staves, each consisting of five horizontal lines, arranged vertically on the page.

